

Annual Picnic at Shoshone Point



The Annual Pioneer Picnic at Shoshone Point on June 7 was as pleasant as an outing can get. The 30+ members and guests experienced hot, dry weather, but plenty of shade to duck into. There was a gentle breeze, outstanding food (especially Linda Anderson's brownies—see recipe) and lively conversation.

Tom Carmony proudly announced the 2003 recipient of the Grand Canyon Historical Society Pioneer Award:

George Billingsley for:

- serving the public as a Park Service ranger at Havasu and as Colorado River boatman;
- his pioneering research of the mining history of Northern Arizona;
- his assistance in developing new, modern geologic maps of the Grand Canyon, and almost single-handedly mapping of most of the Arizona Strip, primarily without the benefit of modern technology;
- discovering a new geological formation in the Grand Canyon, the Surprise Canyon Formation;
- providing insight into geological history and processes across the Colorado Plateau and as far afield as Mars, and;
- diligently recording his field experiences in the Grand Canyon and on the Colorado Plateau, and graciously sharing typewritten diaries and photographs with all who asked.

...continued on page 2

GCHS Outings for 2003

July 4-5: North Rim Campout at the historic Ranger Station at Jacob Lake. Plan for lively informal discussion of the history of the North Kaibab with GCHS members and representatives of the Grand Canyon National Park, Grand Staircase/ Escalante National Monument, and North Kaibab Ranger District. Also, learn how to throw an atlatl and how to make arrowheads (flint-mapping). ...And don't be surprised if you see some people in historic costumes wandering through the woods.

When: Friday- July 4 noon to 6PM

Saturday-July 5 sunrise to sunset

Where: Historic Ranger Station

Jacob Lake (*see page 4 for directions*)

There also may be time to head over to the newly opened Pipe Springs/Paiute Museum and Visitors Center, the first joint-venture of the NPS and a Native American tribe; or go to Warren Springs or the Ryan smelter site. Lots to do, or just relax in the cool pines.

August 16: Annual Cemetery Cleanup. The Grand Canyon Historical Society along with the Grand Canyon Hikers and Backpackers Association will clean up the cemetery at the Grand Canyon South Rim. Part of the work will be replacing some of the fence slats. (The entryway work was completed recently and looks GREAT.) The GCHBA will try to arrange for a group campsite at Mather for Friday night, and for fee waivers for those lacking park passes (however, you will need to ask for a fee-waiver pass to be mailed to you in advance). They will also try for an introduction to the cemetery by interpretive ranger Stew Fritz. Bring gloves, hat and sack lunch. Refreshments will be provided.

September: Anita Mine and the Railroad History by Al Richmond at Anita Mine.

October: Board Meeting and slide presentation in Flagstaff.

November: Phoenix (museum or other).

December: No meeting

Annual Picnic / Awards ...continued from page 1

George is famous for mapping the entire lower Grand Canyon, much of it by foot. A lasting contribution to the science of geology is George's discovery of a new layer in the Canyon, The Surprise formation. This is located on top of the



Redwall. It is late Mississippian. George credits his success in geology to his mentor and former NAU professor, Dr. Stan Beus. Stan accompanied George on many of the geological forays into the Canyon, even dangling from ropes to gain access to specific areas. George also credits the influence of Edwin D. McKee, park naturalist from 1929-1940. George's master's degree thesis is on Tuckup Canyon. His mapping of the Arizona Strip was done mostly without modern technology, although George says there is still work to be done on this.

George confesses that he just loves the Canyon. The thrill of discovery is what keeps him going all these years. He hopes to inspire young people to keep looking—there are still amazing discoveries to be made. George encourages the use of helicopters for research purposes, as the Canyon is just too vast to explore fully by foot.

George was fortunate enough to hike with Harvey Butchart in 1963. He noted that Harvey made a point of writing down the details of each trip after returning. George picked up on that clue and has been keeping hiking journals ever since. We can only imagine these treasures! George was a river runner 30 years ago, completing 70 trips on the Colorado River. He has been working for the USGS for 23 years in the Flagstaff office. His current project is mapping an area from Seligman to Winona to Tuba City to Grand Canyon.

George wanted to be sure to mention the biggest influence in his life—his wife, Susan. The only reason she wasn't here to watch George receive his well-deserved award was because she

had to take their granddaughter to pony camp. Susan is an avid hiker and river runner herself. George is also proud of his two children, Marijka who is currently running the river with Canyon Explorations and Ryan who works in the Flagstaff Walgreens.

George's book "Quest for the Pillar of Gold: The mines and Miners of the Grand Canyon" was co-authored with Dove Menkes and Earle Spamer.

George is currently working on a story of how the Canyon was formed, and what does it mean. But getting 70 geologists to agree on anything is not going to be an easy task!

Our hats are off to this worthy recipient of the Society's Pioneer Award.

Al Richmond, on behalf of the Grand Canyon Historical Society and the National Park Service Grand Canyon, presented the **Hall of Fame Award for Community Service** in recognition of those organizations and individuals who have selflessly contributed to the betterment of the Grand Canyon community over years past. The sixth award names three individuals who have shown exemplary service to the Grand Canyon Community. All three recipients have made personal contributions of money, time, and work over a period of many years. Two recipients are deceased and, happily, the other is still with us.

The awardees this year are: **Louise M. Hinchliffe** (living) and **Samuel E. Turner Sr. & Eloise Fain Turner** (both deceased).

These folks were recommended for their community service by previous recipients of the award. We rely on their recommendations as they know better than anyone who has been involved in community service at the Grand Canyon.

Louise Hinchliffe was a Grand Canyon institution for nearly forty years. Her duties over the years included interpretation, museum and visitor center support, Natural History Association secretary, and she is primarily remembered as the librarian. During this time she worked with acquisitions of nearly 5000 volumes and endured a couple of moves.

...continued on page 3

Annual Picnic / Awards ...continued from page 2

Her real contribution to the community came through her long and considerable knowledge of the Canyon, the Village, and its people. As librarian she assisted many authors with their research, reviewed manuscripts, and corrected errors. During her tenure the card catalog at the library became the least used resource. When researchers presented themselves to Louise with their requirements, she simply went into the stacks and returned with the appropriate books and documents from memory. Louise also recommended additional sources and provided these as well.

Another lasting impression left by Louise upon the community are the names of Juniper Hill, Center Road, and Sunset Drive.

All of those who have visited with Louise in order to learn more about the Canyon never came away disappointed.

As to **Sam and Eloise**, we could not consider one without the other. They worked together in many of the community activities. Although Sam served as the Santa Fe station master for many years and considered by many to be the "mayor" of Grand Canyon Village, Eloise was probably the more outgoing, verbal member of the family. She wrote for the Associated Press and the *Santa Fe Magazine*.) She covered the collision of the United Airlines and TWA crash over Grand Canyon. During the war years, she taught in the Grand Canyon School. Eloise also directed some of the local productions at the Community Building and both occasionally appeared in some productions. For a time, she taught piano lessons. They were co-presidents of the Grand Canyon Square Dance group. Sam's responsibilities included supervision of all of the Santa Fe structures that now form the Historic District. In this he took a personal interest in their appearance and did his best to take care of the facilities in cooperation with the Park Service. The Park relied on him for smoother operation of the utilities and water systems...all built, operated and maintained by the Santa Fe at that time. Both took a personal interest in "their" community and its people.

One thing Eloise contributed may be more intangible: In her years of teaching, and in the journals she wrote, along with our conversations,

she was dedicated to the beauty of Grand Canyon and the importance of preserving it for future generations. She taught her school children those concepts. Sam and Eloise both contributed considerable time and effort to the Grand Canyon community.

[Article by Nancy Green]

Note: For a complete list of awardees, see the Society's web pages at GrandCanyonHistory.org.

Picnic Dessert

Chocolate Streusel Brownies

1-1/4 C flour
1-1/4 C confectioner sugar
3/4 C unsweetened cocoa powder
1 C cold butter
8 oz. cream cheese, softened
1 can (14oz) sweetened condensed milk
1 large egg
2 tsp vanilla
1/2 C semisweet chocolate chips
1/2 C chopped walnuts

Preheat oven to 350 degrees. Mix flour, sugar and cocoa powder in large bowl. With pastry blender, cut in butter. Press all but 2 cups mixture over bottom of a 13"x9" pan. Bake 15 minutes. Cut up the cream cheese and beat until fluffy. Gradually add condensed milk, egg and vanilla. Pour over crust. To the reserved 2 cups mixture, add chips and walnuts. Mix well and crumble over cream cheese mixture. Bake for 25 minutes. Cool. Refrigerate. Makes 24 squares.

[Submitted by Linda Anderson]

Picnic Attendees

The 2003 GCHS picnic was held at the usual place, Shoshone Point. The Park Service revamped the area with fencing, new plants over a year ago. A bright sunny day brought more than 30 guests to enjoy a lovely day and great company. Jack and **Chris Greening*** came from Boulder City, Nevada; up from Williams came Buford and **Myra Belgard*** and **Mary Hoover***; George Billingsley, Don Lago and several others came from Flagstaff; Stan Beus from Sedona; and Marie Maiorana of Parker Colorado rode up with the Cassidys and Surans. Locals Mike Quinn and Michael and Linda Anderson promoted the history conversation around the abundance of food.

* Former Harvey Girls.

Letters to GCHS

To the members of the GCHS

I am honored that the Grand Canyon Historical Society Pioneer Award Committee considers my research in and around the Grand Canyon worthy of the 2003 Pioneer Award. I am delighted to be included on the list with past honorees of this award. I hope to continue my geologic research in and around the Grand Canyon for several years to come and to publish the results of my work so that society as a whole can learn and benefit from what I have been fortunate to learn.

Again, many thanks to the GCHS Pioneer Award Committee and the members of the Grand Canyon Historical Society for this prestigious award.

George Billingsley
Flagstaff, AZ

To the members of the GCHS

I received three copies of a VHS video taken by Mike Quinn of the presentations at the 2003 annual picnic. One of the tapes will go into the NAU Special Collections. I'll be happy to send a tape to anyone who would like to see the day's events.

Al Richmond
6774 E. Vail Dr. - Flagstaff AZ 86004
Al.Richmond@NAU.EDU
928-523-7209

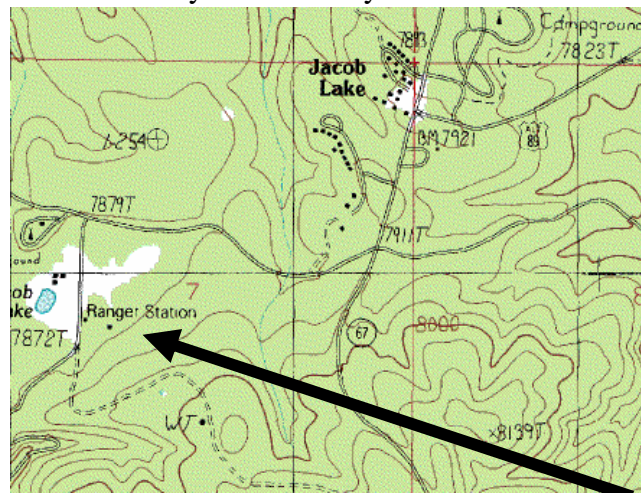
* * * * *

New Members

Todd Berger – Grand Canyon AZ
Nancy Tardy – Henderson NV
Fred W. Croxen II – Flagstaff, AZ

North Rim Campout: July 4-5

This year enjoy the history of Grand Canyon with fellow GCHS members at the North Rim campout at the historic ranger station at Jacob Lake on Friday and Saturday.



From Jacob Lake Inn, go south on Hwy 67 and turn west on FS 462, continue south on FS 462. The historic Ranger Station is on the east side. There should be signs directing you along the way to the ranger station. *See page 1 for more details.*

* * * * *

Thank You

Thank you to those of you who found us on the Internet or through friends and decided to share your history with us; especially to **Barbara Ybarra, Thomas Wolfrum and Barbara Ohlwiler (Bobbie Smith)** for contributing stories and photos of early days at Grand Canyon. Look for their articles and more in the October/December issue of *The Ol' Pioneer*.

To the Readers of *The Ol' Pioneer Magazine*:

Please excuse the errors in the July/September issue of the *The Ol' Pioneer* magazine. My computer went on the blink just before I finished correcting errors. Sorry- Better work next time.

Bill Suran, editor of *The Ol' Pioneer*

Outings/Programs: If you have a suggestion for a future outing/program or a question about an upcoming event, contact the **2003 Outings Coordinator:** John Azar, PO Box 1121, Fredonia AZ 86022; phone 928-643-6423; email: TontoWalk@msn.com.

The Bulletin welcomes comments, stories, or reflections and remembrances. Please send them to Diane Cassidy at P.O. Box 10067, Prescott, AZ 86304; email: Pioneers@GrandCanyonHistory.org.