

August 20, 2021

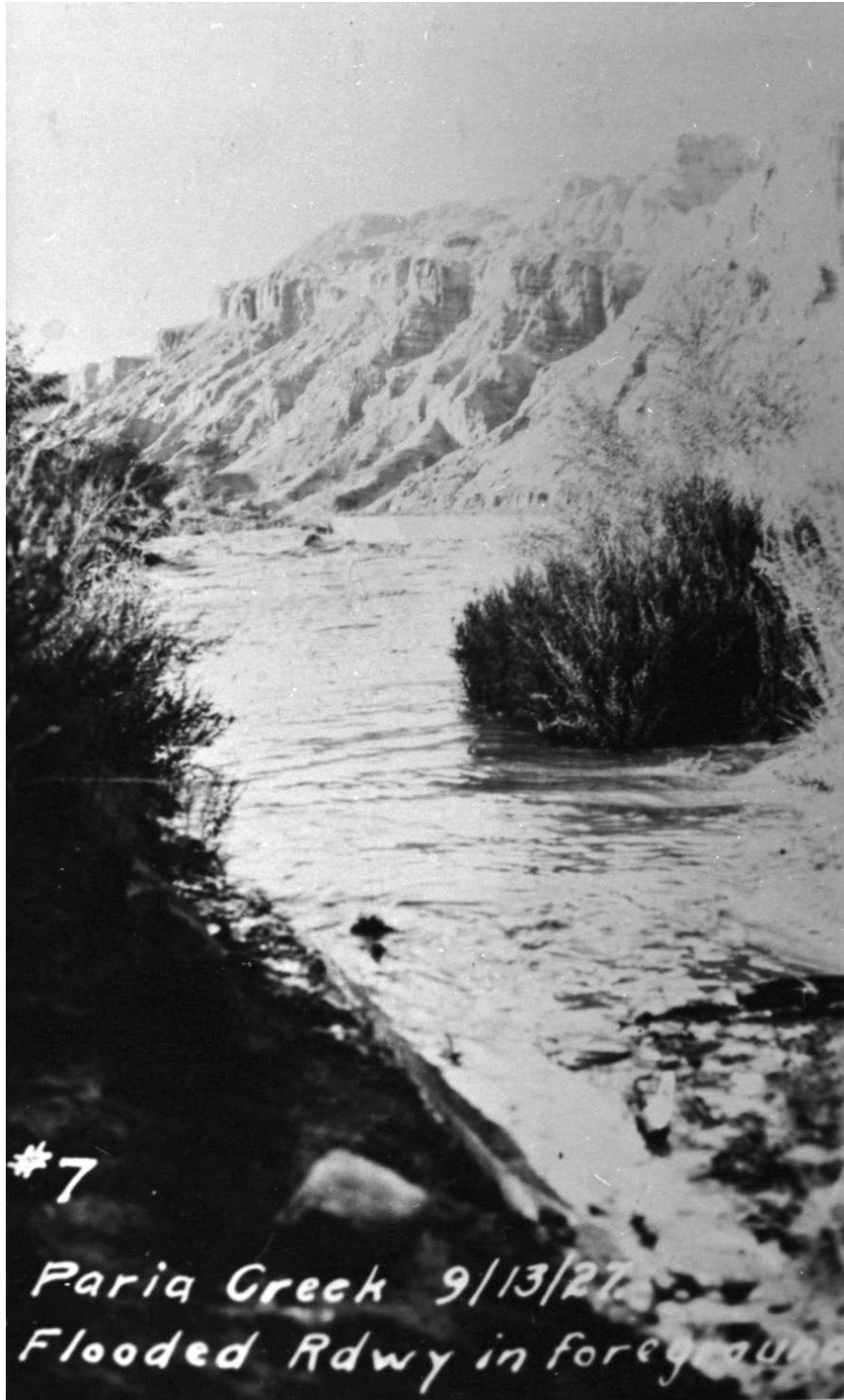
Grand Canyon History Tidbit by Kim Besom

The Power of Water

The power of water in arid places: As we've seen this summer, even in the midst of a drought, monsoonal rains- as well as spring runoff- can bring bursts of water inundation. Though erosion caused by water is the main natural process that created the Grand Canyon, it can wreak havoc on the human-made features in the park, as the following images will attest.



#15918: Flooding waters on the South Rim, 1907, flow past the first schoolhouse- next to the railroad tracks near the Bright Angel. Imagine the stories of getting to school on that day!



#14810: In September 1927, an overflowing Paria River flooded the roadway at Lees Ferry.



#13996: Snow melt in February 1932, caused flooding on the south approach road to Grand Canyon.



#12770: A rain and hailstorm damaged the East Rim Drive, in July 1946.



#5098 Flash flooding in the spring of 1966, caused Bright Angel Creek to change its course...



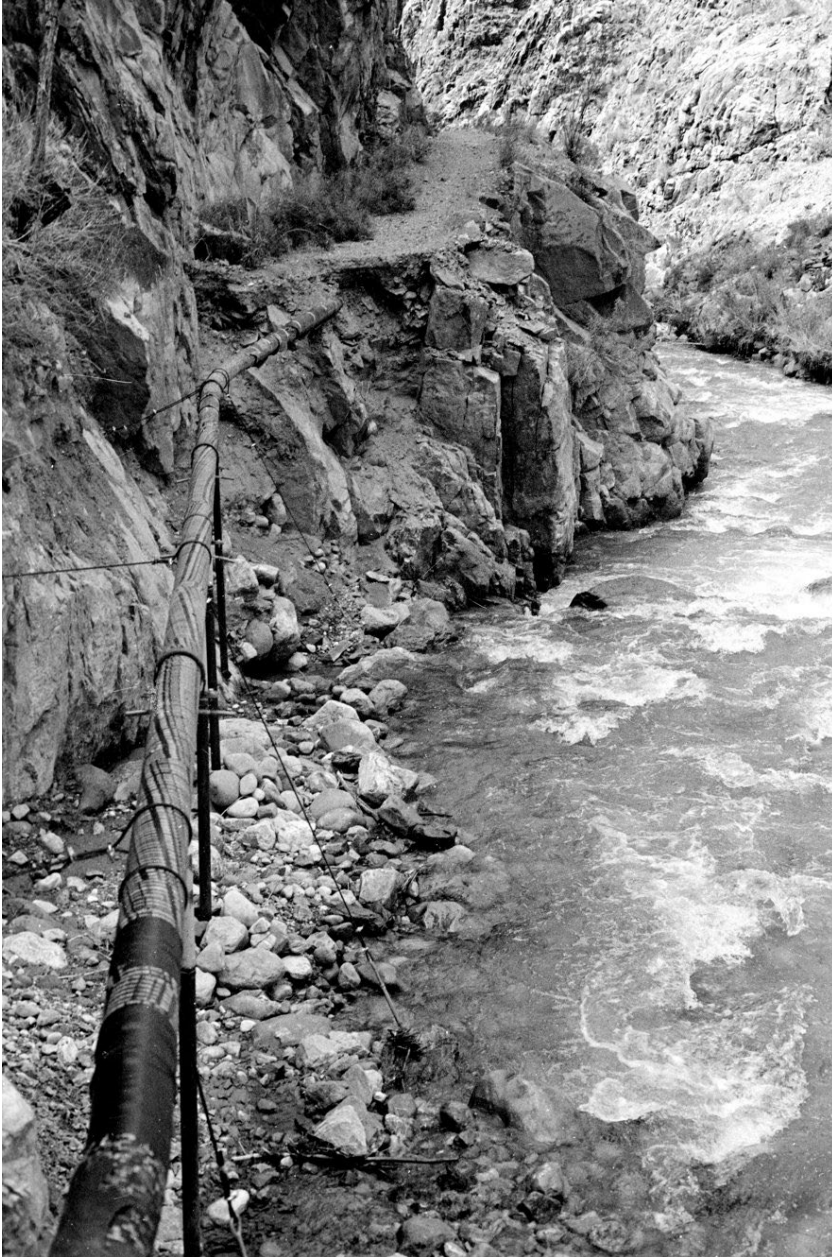
#5099:...and damaged the NPS Bunkhouse building.



#10043b: Flooding on the South Rim in July 1983.



#10045c: Flooding on the South Rim in July 1983.



#15432: Flash flooding of Bright Angel Creek destroyed parts of the North Kaibab Trail, exposing the pipeline, in March 1995.

As we've also seen this summer, and many times before, flash flooding can be far more damaging to humans.

Flood safety tips can be found on the park's website at:

<https://www.nps.gov/grca/planyourvisit/weather-dangers.htm>

Stay safe out there!