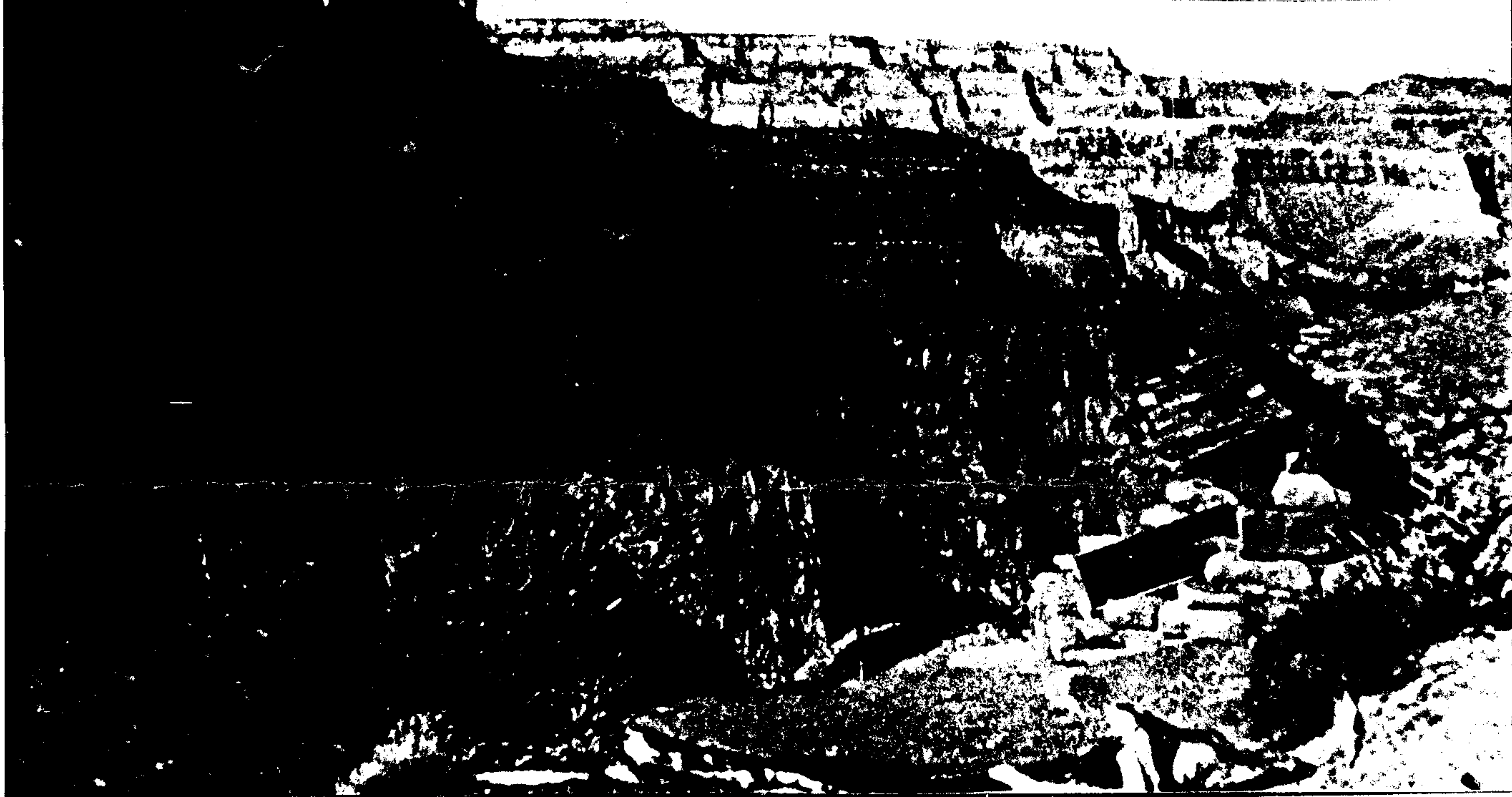


# RIMMIN'



VOL. V,  
No. 5  
JUNE-JULY  
1989

PHOTO BY BETTY L. BARTLETT — KAIBAB TRAIL, CEDAR RIDGE — 11-30 '88

PUBLISHED BY — GRAND CANYON PIONEERS

P. O. Box #222  
Flagstaff, Ariz. 86002

## SPECIAL ISSUE

FROM OUR MEMBERS



(l-r) Pits, Mona, D'Ann...front, Nancy



Corporate Sales & Marketing

SERVICE HAS BEEN A *Fred Harvey* TRADITION SINCE 1876. NOT A TREND

GRAND CANYON HIKE

FROM: Nancy, Exec Secretary  
Sales & Marketing

THEY SAID IT COULDN'T BE DONE.....BUT, CORPORATE CAN!

If you think that only the "young & fit" can tackle and conquer the trails of the Grand Canyon, you should have been in that vicinity the last weekend in April....Fred Harvey employees Pits - Mgr of Marketing Services - D'Ann, Nat'l Sales Mgr. - Nancy, fleet-footed Exec Sec. - and Mona, Travel Services Mgr (from an unknown hotel in the Phoenix area) really showed us how it's done. Down to Phantom Ranch on the Kaibab trail in less than 4 hrs, gobbled thick steaks, slept soundly till 4:45am, and then back out the Bright Angel trail in 6 hrs. Would they do it again? **JUST GIVE THEM THE CHANCE!** Pits will continue her love affair with the Grand Canyon on a River Trip at the end of this month. There's no slowing her down! So get out there, one and all....WHAT A WAY TO SEE ONE OF THE SEVEN WONDERS OF THE WORLD!

FRANCIS RAYMOND LINE  
HELEN E. LINE

"Lines on the world"

Dear Friends:

The only anniversary cake ever to be packed by muleback from Phantom Ranch at the bottom of Grand Canyon up to the Canyon's South Rim was the focus of a reunion of Grand Canyon hikers at our home Sunday, May 7, 1989. It came about as follows:

This past May 1 was our 61st anniversary. After celebrating our 60th in a snowstorm at the Canyon last year, we had decided that Helen should not attempt the hike down again, but we would be content, instead, for the two of us to hike along the Rim. So Helen stayed at the top, spending the time by autographing our book, GRAND CANYON LOVE STORY, which she found people bought not only to read but as a souvenir. But Francis and our daughter Adrienne Knute made the hike down and out. For the evening dinner the young Phantom Ranch manager, Leslie, brought in a beautifully decorated 61st anniversary cake. Her professional cake decorator mother had hiked in for this occasion, just as she had done last year for our 60th. This cake which they brought in was for Adrienne and Francis and the rest of the guests. But then Leslie and her mother brought in another cake, also gorgeously decorated. That one was just for Helen. They would freeze it overnight and send it out to her by muleback.

On Sunday May 7, we assembled 18 of last year's hikers and we ate that famous "muleback-delivered" cake and celebrated. One of those hikers, 61-year-old Helen Hayes, ran the Long Beach marathon earlier that day but speeded up so she could attend the afternoon party. We telephoned as many other hikers as we could reach back east, including Victor Blackburn, his sister Gail, and Fran Lyman in Ann Arbor.

For the last dozen years we've been making the foot trek into Grand Canyon on each May 1, and the 10 1/2 miles back out on foot next day. On this trip we were overwhelmed with expressions of appreciation by personnel at the Canyon. We received a complimentary helicopter tour of much of the Grand Canyon area. The cost of the overnight stay and meals at Phantom Ranch was reimbursed to us. "This year it is on us," said the cashier.

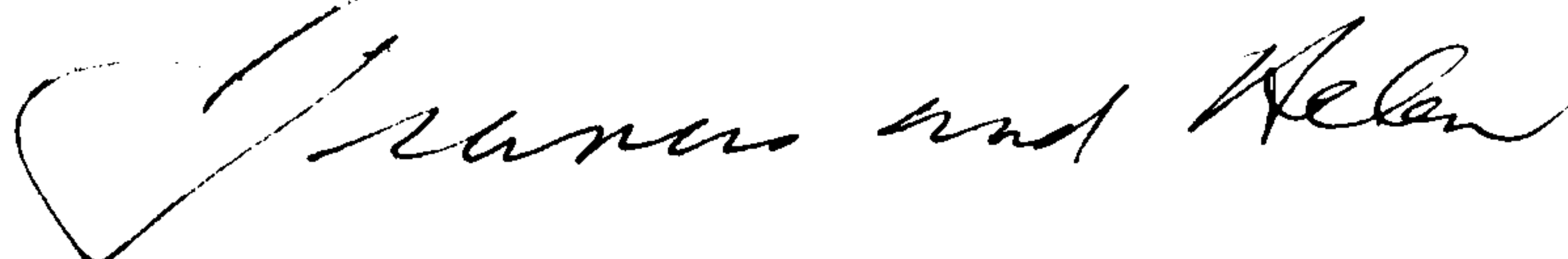
In response to the guest applause when the anniversary cakes were brought in at Phantom, Francis made a brief talk. "Sixty percent of those who hike in the Canyon are now from foreign lands," he said. "The question I always ask everyone on the trail is 'Where are you from?' This year we found that most of the hikers were from Germany, England, Holland, and Australia.

"The question the hikers invariably asked me is 'How old are you?' A writer once wanted to know Cary Grant's age, so sent him a brief telegram: 'HOW OLD CARY GRANT?' The reply came back: 'OLD CARY GRANT FINE. HOW YOU?' But I don't mind telling my age. I am proud of the fact that I have been hiking the Canyon for 66 years and first visited Phantom Ranch in 1923. When I said to one man in response to his query, 'I am 85' the man exclaimed, 'Oh, my God!'"

In closing, we say "FRANCIS AND HELEN FINE. HOW YOU?"

The very best, and

Wide Horizons,

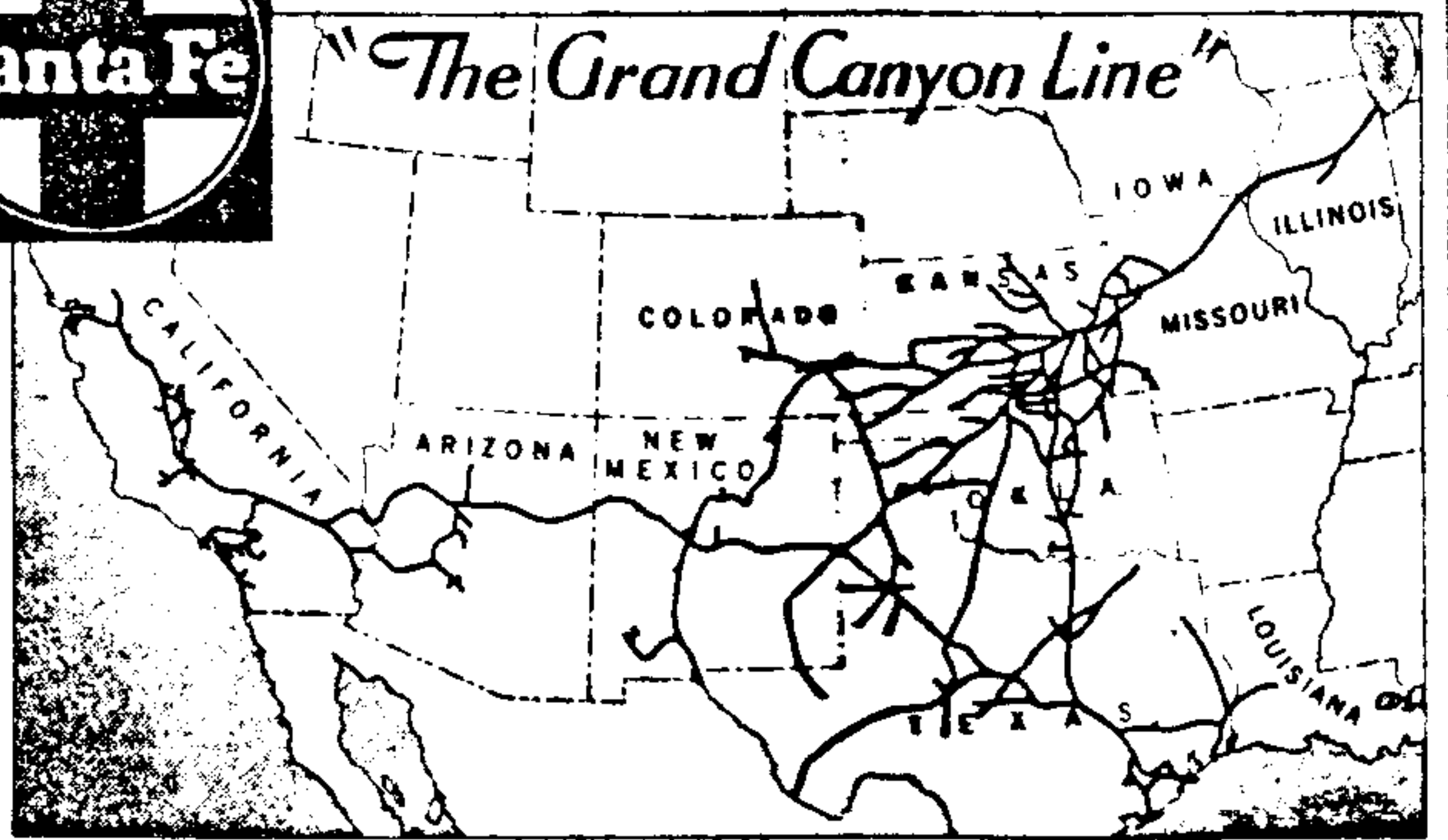


P.S. We are now settling back to work hard on the book we're now writing, SUPER SENIORS, THEIR STORIES AND SECRETS.

Authors of Grand Canyon Love Story, Man With A Song,  
Blueprint For Living, Adventure Unlimited,  
Sheep, Stars, and Solitude, Foot By Foot Through the USA



"The Grand Canyon Line"



# The Atchison, Topeka and Santa Fe Railway Company

COAST LINES  
Grand Canyon, Ariz.  
OFFICE OF AGENT

S. E. TURNER, Agent

## THEN & NOW



Thelma & Betty Bartlett chat with Special Santa Fe "Agent" Dick Bosley in front of the Depot. (Photo by Sam Turner, June, 1950)

The Then-Now "Seminar" on the Santa Fe at Grand Canyon (held at the Grand Canyon National Park Lodges Orientation Room, May 31) drew a wonderful group, mostly from the ranks of the Fred Harvey Transportation Dept. After a bit of Nostalgia via Slides and Sounds of Santa Fe's hey-day at Grand Canyon, a lively exchange of comments and concerns ensued. The concerns centered around the Grand Canyon Railway's plan to bring trains (strickly tourist) back by April 1990. It is felt that several points of logistics have not been addressed by the Company....such as: What happens to the folks who come by train; traffic flow, and parking problems; servicing of engines and passenger cars.....employees, etc. RIMMIN' is preparing a THEN-NOW ANALYSIS, which should be available next month. (Some samples below)



Steam engine "rests" at the service area. B.A. Lodge & Brown Bldg. in back-ground. (Note Pipes) (photo by B. Bartlett, June 1950)



Recent photos for comparisons (taken by B. Bartlett, June 1989)



THE LAST OF THE BIG STEAM SPECIALS (2900 Engines)  
(Photo by B. Bartlett, summer, 1952)



DOWNY AT  
THE MULE  
BARN by  
Betty, a  
FRED HARVEY  
MULE

*Ch*

PHOTOS BY B.L. BARTLETT



Lady Wrangler Jane Gregory brings a Plateau Party safely back.

Howdy Folks! Because both Dinky and Waco are kept so busy on the trails, my name-sake asked me to carry on this column in true Mule tradition. Are you aware that the Mule Operation at Grand Canyon is the largest and most continuous in the world? This coming September, it is hoped that a MULE FESTIVAL can be held at Grand Canyon. By the way, I am half of the Harness Team, my sister Bess is the other. We came from Tennessee a few months ago and have really been enjoying our training and duties at the Canyon. (More on us later)



Lady Wrangler Shirley "Buffy" Belle on ICEMAN. Go mule! (I will be commenting on our ladies in future columns)

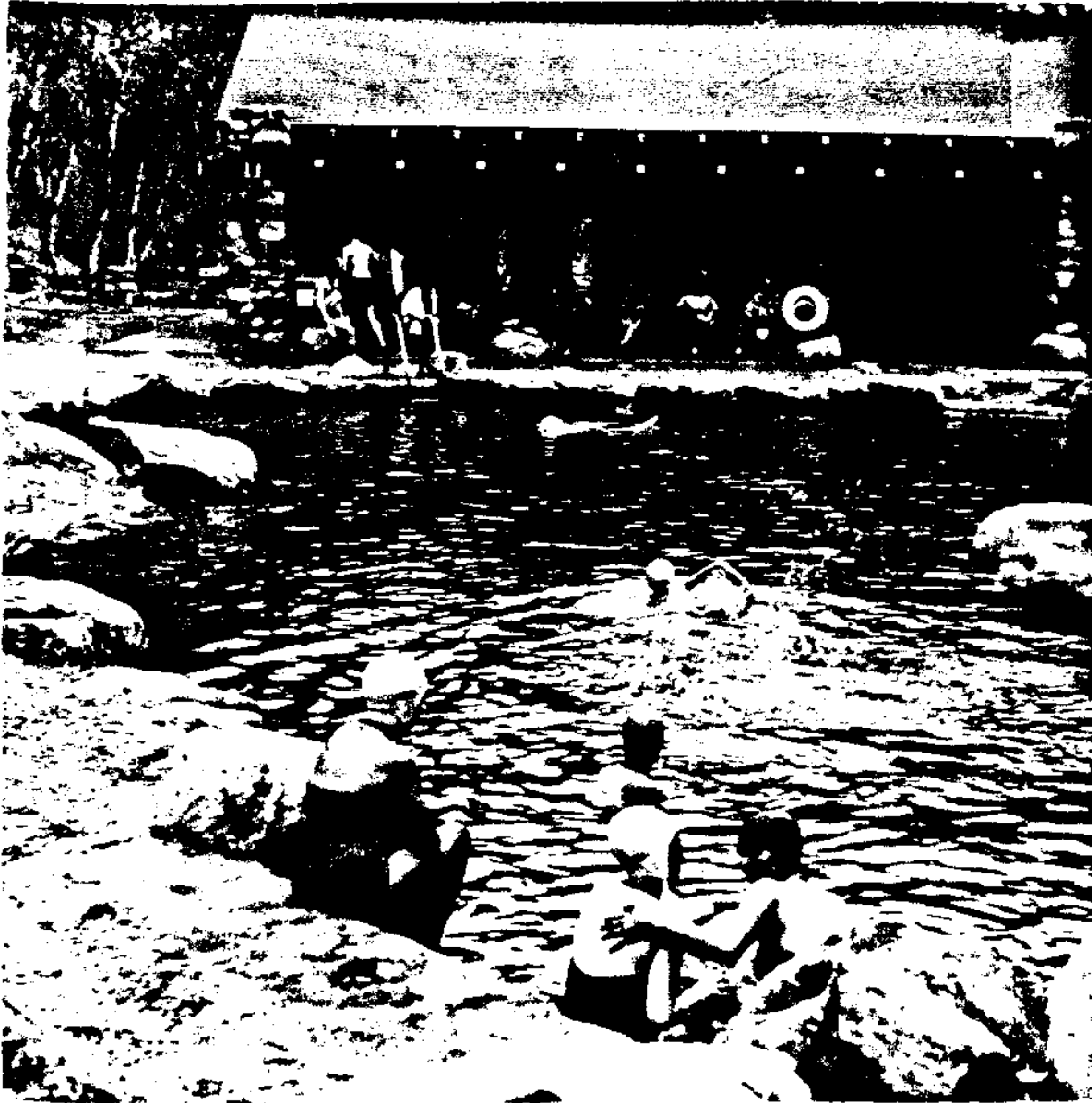


Bud Dunagan is back in the saddle again (Part-time). Bud worked on the trails back in the 1950's. He also worked as a Deputy Sheriff and was known as "MARSHALL DILLIGAN"

WORK AROUND THE BLACKSMITH SHOP AND THE MULE BARN CORRAL IS NEVER DONE  
"SKINNER" SHOES THE MULES AND LIVERY MANAGER RON CLAYTON "SCOUPS" MANURE  
(As RON HAS COMMENTED: "He is sure glad he doesn't have elephants")



# LOOKING BACK!!



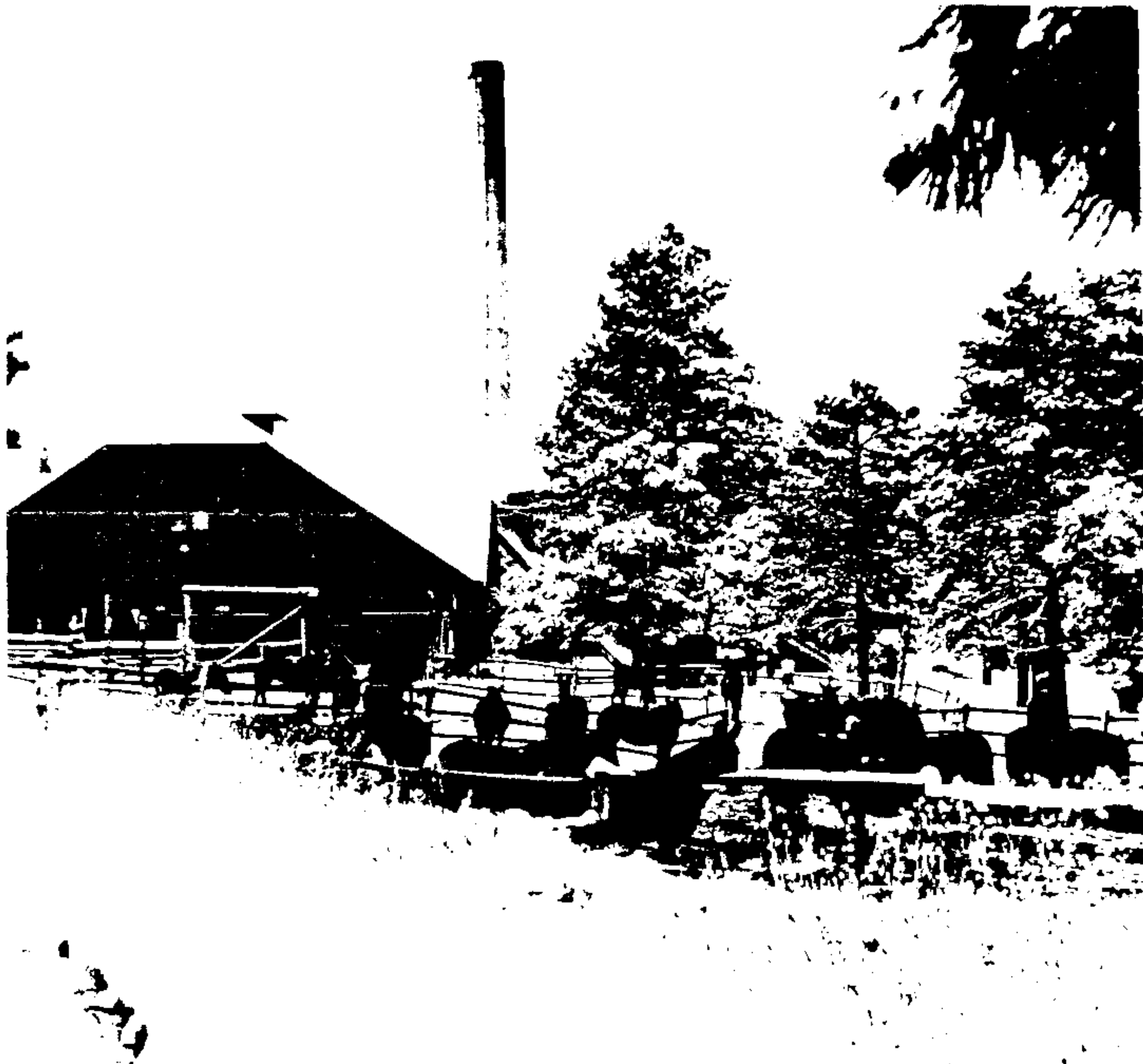
GUESTS ENJOY A COOL SWIM IN THE PHANTOM RANCH POOL  
(photo by B.L. Bartlett)

CIRCA  
LATE  
1940's  
EARLY  
1950's

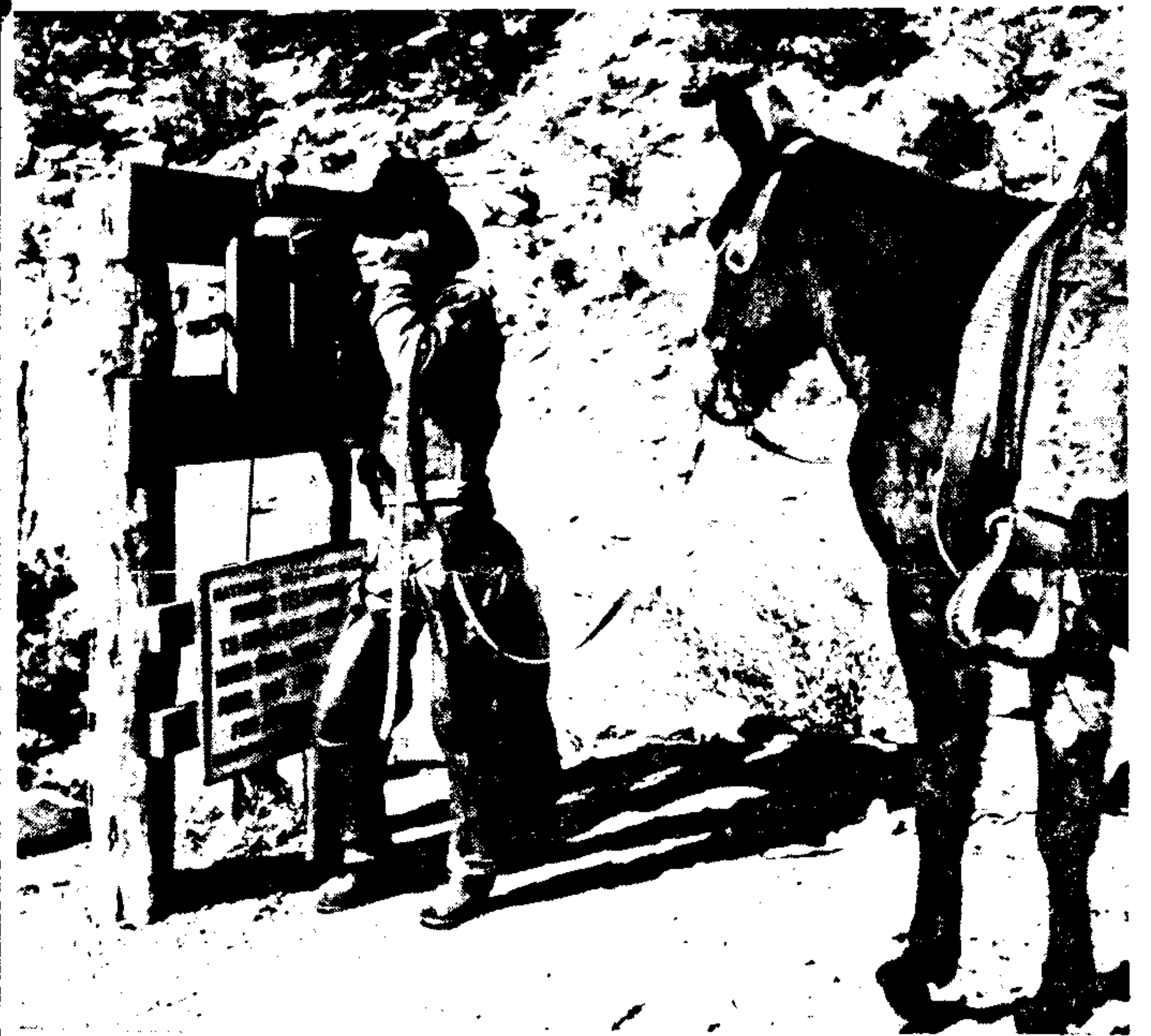
(Right) When Frances Mahan of the General Office took a vacation out west this spring, she climbed up on one of our mules (Ida) at Grand Canyon and took a ride. Frances is secretary to the president of the company. She is shown at the right in this photo. Her companions for the ride down the trail were Erika Hublitz (center) who is secretary to the general manager at the Canyon, and Professor G. Destriau of The Sorbonne in Paris, France. He's riding Bill and Erika is aboard Icky.



FROM HOSPITALITY MAGAZINE



THE POWER HOUSE SMOKE STACK, THE OLD MULE BARN AND CORRALS, AND THE LONG EARED TAXIS. (Winter)  
(Photo by B.L. Bartlett)



WRANGLER\*GUIDE SHERMAN EVERLY PLACES A CALL ON ONE OF THE BRIGHT ANGEL TRAIL PHONES (Wonder if he is arranging for a "hot date"...his mule Bard seems to be anxious to make a call too!)

FRED HARVEY MULES MEET THE GEOLOGY CLASS FROM ASC, FLAGSTAFF AT THE RIVER HOUSE. THE CLASS (Under the leadership of Dr. Agnes M. Allen, geology prof. & head of the Sci. Dept.) HAD HIKED DOWN THE KAIBAB TRAIL THE DAY BEFORE: SPENT THE NIGHT AT PHANTOM RANCH, THEN HIKED THE RIVER TRAIL TO THE RIVER HOUSE. ALL IN ALL A VERY IMPRESSIVE WAY TO LEARN THE G.C. GEOLOGY ! This yearly event went on for over 27 years

PHOTO COURTESY OF AGNES M. ALLEN



32 YEARS  
AGO  
*Ch*

PARK NATURALIST  
LOUIS SCHELLBACH  
COMMENTS ON THE BACK-  
GROUND AND PURPOSES OF  
THE VISITOR CENTER.

(photo by B.L. Bartlett)

*Opening Ceremony*

RECOGNIZE  
THIS STRUCTURE?



This familiar building served for many years as the South Entrance Station at Grand Canyon. It is now serving again at Sunset Crater National Monument. (Photo by B.L. Bartlett)

# Visitor Center

GRAND CANYON NATIONAL PARK  
Grand Canyon, Arizona

2:00 P. M.

June 29, 1957

VISITOR CENTER TERRACE



## PROGRAM

- WELCOME.....Superintendent John S. McLaughlin
- INVOCATION.....Rev. Hilka D. Green
- INTRODUCTION OF GUESTS.....Superintendent John S. McLaughlin
- THE VISITOR CENTER,  
Its Background and Purpose.....Park Naturalist Louis Schellbach
- ADDRESS.....Mr. Ronald F. Lee, Chief of Interpretation,  
National Park Service, Washington, D. C.
- BENEDICTION.....Father Norman Smith

OPENING OF THE VISITOR CENTER—Followed by Tour of the Building

LOUIS SCHELLBACH CHATS WITH GOOD FRIENDS AND ASSOCIATES: (from L) CHESTER "Danny" DEAVER, JUNIA McALISTER, Dr. AGNES M. ALLEN (A.S.C. Flagstaff Science Faculty....now N.A.U.), and BOTANIST HORACE HASKELL.

(photo by B.L. Bartlett)

